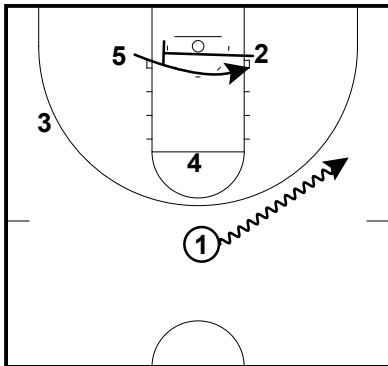


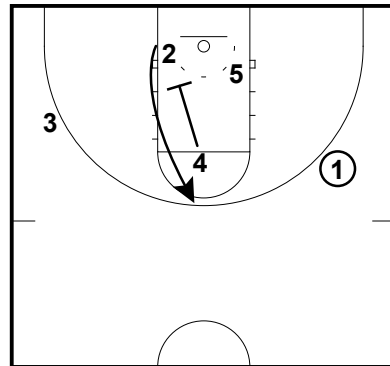
Osterman's -Play of the Day

Tri-Angle
OFFENSIVE SETS



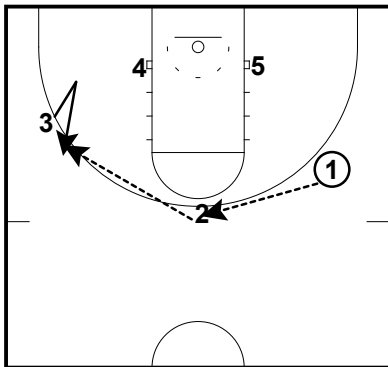
1 BEGINS THE PLAY WITH A DRIBBLE ENTRY
2 THEN SETS A CROSS SCREEN FOR 5

Tri-Angle
OFFENSIVE SETS



THEN 4 SETS A DOWN SCREEN FOR 2
1'S LOOKS ARE 5 WHO CAME OFF THE CROSS SCREEN
AND 2 COMING OFF THE DOWN SCREEN

Tri-Angle
OFFENSIVE SETS



THE BALL IS SWUNG AROUND AND 3 V-CUTS TO GET OPEN
WE ARE NOW IN OUR 3 OUT 2 IN SET